



Hettich fitting groups in imos

Technik für Möbel



# Content

Sliding & folding systems.....3

# Sliding & folding systems

Technik für Möbel





## InLine XL

Max.door weight 60 kg

- Sample Cabinet
- Connector Set
- Connector



## TopLine XL

Max.door weight 80 kg

- Sample Cabinet
- Connector Set
- Connector



## TopLine L

Max.door weight 80 kg

- Sample Cabinet
- Connector Set
- Connector



## TopLine 22

Max.door weight 50 kg

- Connector Set
- Connector



## TopLine M

Max.door weight 35 kg

- Connector



## SysLine S

Max.door weight 15 kg

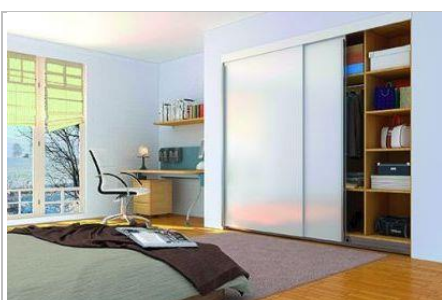
- Connector Set
- Connector



## TopLine 110

Max.door weight 20 kg

- Connector Set
- Connector



## TopLine 1

Max.door weight 50 / 75 kg

- Connector



## TopLine 25 / 27

Max.door weight 35 kg

- Connector Set
- Connector



### **TopLine 1200**

Max.door weight 45 kg

- Connector with General Information



### **TopLine 1210**

Max.door weight 80 kg

- Connector with General Information



### **SysLine 1230**

Max.door weight 125 kg

- Connector with General Information



### SlidLine 97

Max.door weight 25/50 kg

- Sample Cabinet
- Connector Set
- Connector



### SlidLine 55 Plus

Max.door weight 15 / 30 kg

- Connector Set
- Connector



### SlideLine M

Max.door weight 10 / 30 kg

- Connector Set
- Connector



### SlidLine 66

Max.door weight 10 kg

- Connector with General Information



### SlidLine 56

Max.door weight 40 kg

- Connector



### SlideLine 55

Max.door weight 15 / 30 kg

- Connector Set
- Connector

## Sliding door / Vertically running



### **VerticoSynchro**

Max.door weight 15 kg

- Connector with General Information



### **VerticoMono**

Max.door weight 15 kg

- Connector with General Information

# Folding door system



## WingLine L

Max.door weight 25 kg

- Connector



## WingLine 220

Max.door weight 25 kg

- Connector Set
- Connector



## WingLine 230

Max.door weight 20 / 23 kg

- Connector with General Information



## WingLine 770

Max.door weight 20 kg

- Connector Set
- Connector



## WingLine 780

Max.door weight 10 kg

- Connector with General Information



## WingLine 26

Max.door weight x kg

- Connector Set
- Connector



## WingLine 170

Max.door weight x kg

- Connector Set
- Connector



## WingLine 77

Max.door weight 25 kg

- Sample Cabinet
- Connector Set
- Connector



## Wing 77

Max.door weight 20 / 25 kg

- Connector Set
- Connector





### KA 5740

Max.door weight 14 kg

- Connector with General Information



### Horizon Plus

Max.door weight 20 kg

- Connector with General Information